

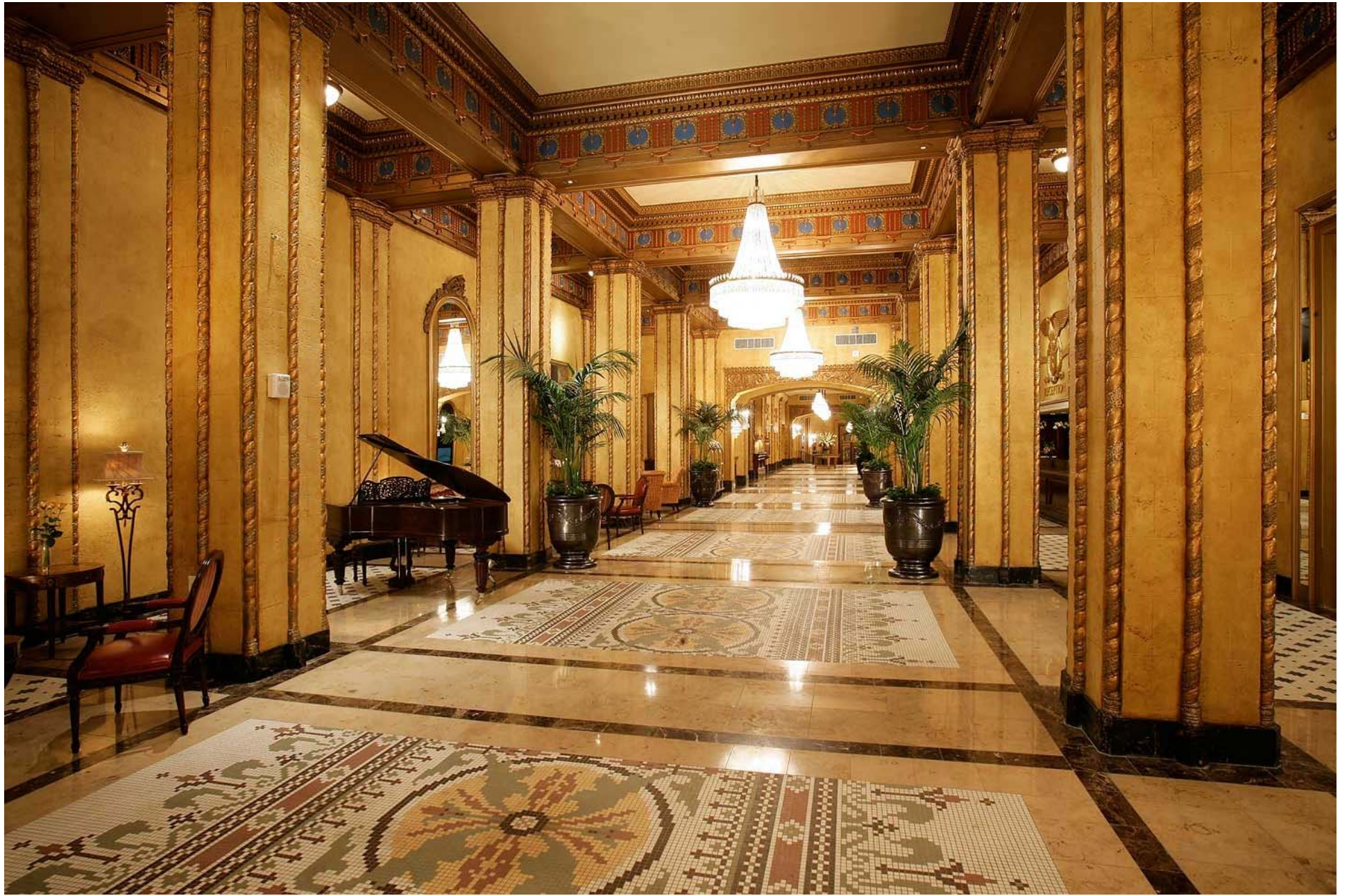


The Roosevelt
NEW ORLEANS

WALDORF ASTORIA COLLECTION™

“Opening June 2009, An era of Grandeur and Elegance is Reborn”







Key Selling Features

Guest Rooms

- 504 Luxury Guest Rooms
- Largest Guest Rooms in New Orleans
- Guest Recognition Program
- 135 Suites
 - King Suites
 - Luxury Suites
 - Waldorf Suites
 - Astoria Suites (Butler Service)
 - Presidential Type (3)



Key Selling Features

Meeting & Event Space

- Total 63,000 square feet of unique and versatile meeting space
- 3 major ballrooms on one level
- 20,000 square foot Roosevelt Ballroom divides into 5 sections
- Huey P. Long Executive Boardroom
- The Blue Room
- Total 23 Meeting Rooms
- Outdoor Garden Terrace 15,000 square feet
- Conference Concierge

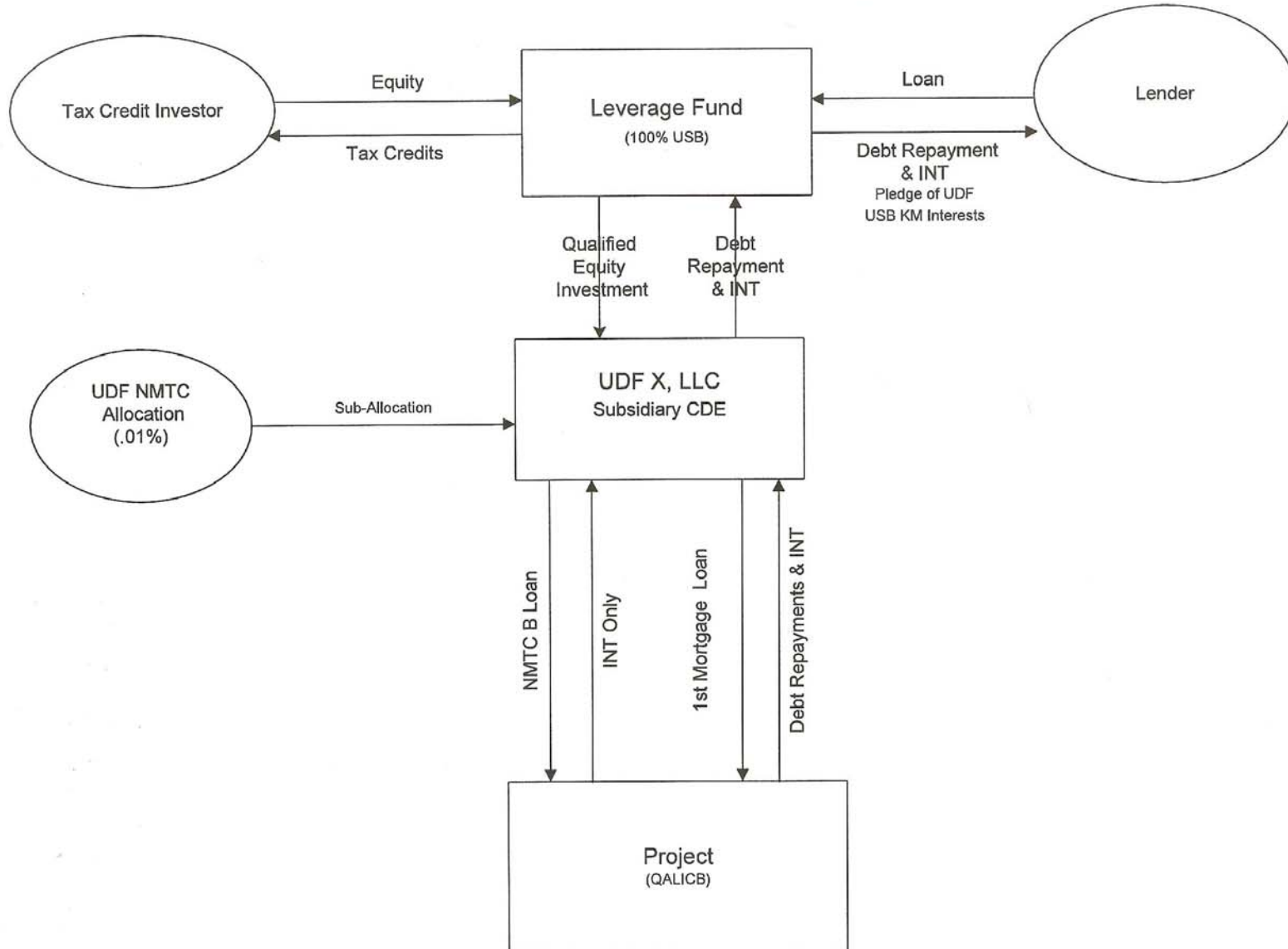


KEY SELLING FEATURES

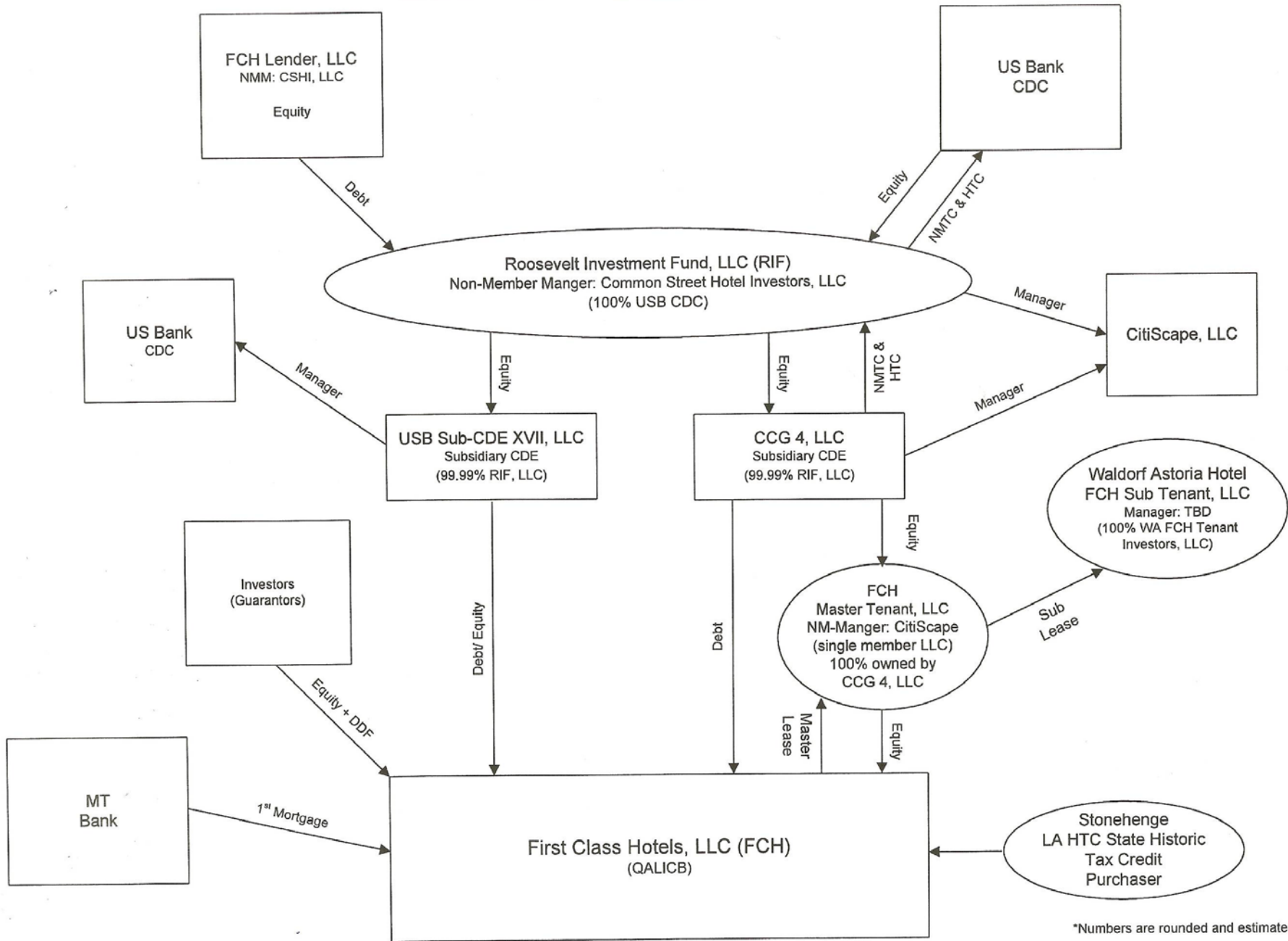
Dining & Entertainment

- Chef John Besh Signature Restaurant – Domenica – Italian Inspired
- Sazerac Bar and Restaurant
- Return of the Famous Blue Room Brunch
- Coffee Boutique
- Private Dining Experience
- Spa Guerlain – 12,000 square feet
 - Treatment Rooms and Fitness Center

NMTC Investment Structure



The Roosevelt Hotel NOLA
NMTC Investment Structure



*Numbers are rounded and estimated





